

RGB TECHNIQUE

Your Face

When you look in the mirror you can see your face. But do you know what makes your face a different shape to your friend's face?

It's your skull. You have lots of bones in your skull. Can you feel the bone under your eye? This forms the hole where your eye sits.

There's only one bone in your skull that moves and that's your jaw bone. This lets you open your mouth and chew your food.



AMAZING FACT

Some bones in your skull help to protect your brain, so if you bang your head, the hard bones around your brain stop it from being damaged.

To see your skull, look through the RED filter.



Your eyes let you see what's going on around you.

Use the GREEN filter to see your eyes.



Your ears pick up lots of sounds.

To see your ears, look through the GREEN filter.



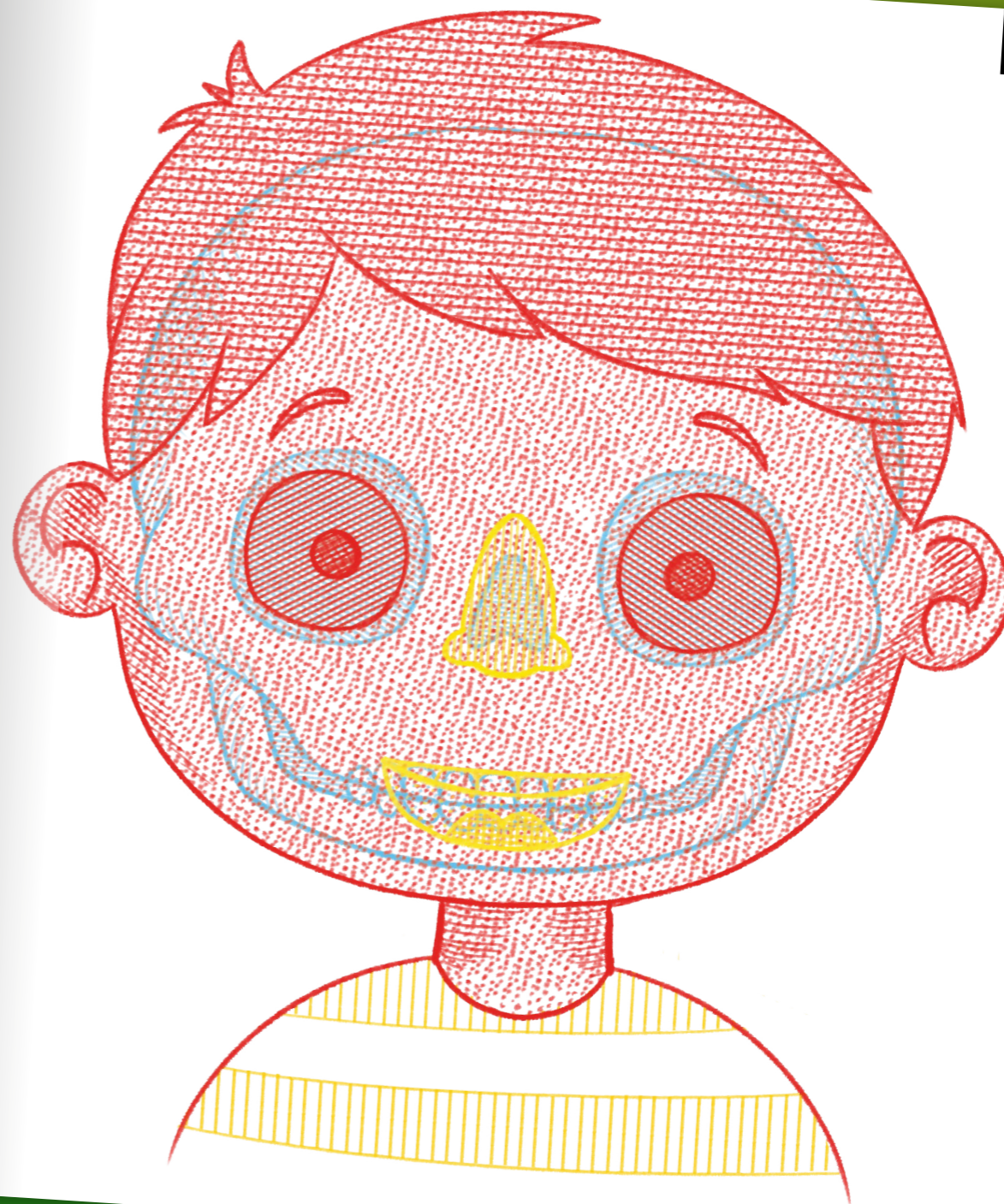
Your nose tells you about different smells.

To see your nose, look through the BLUE filter.

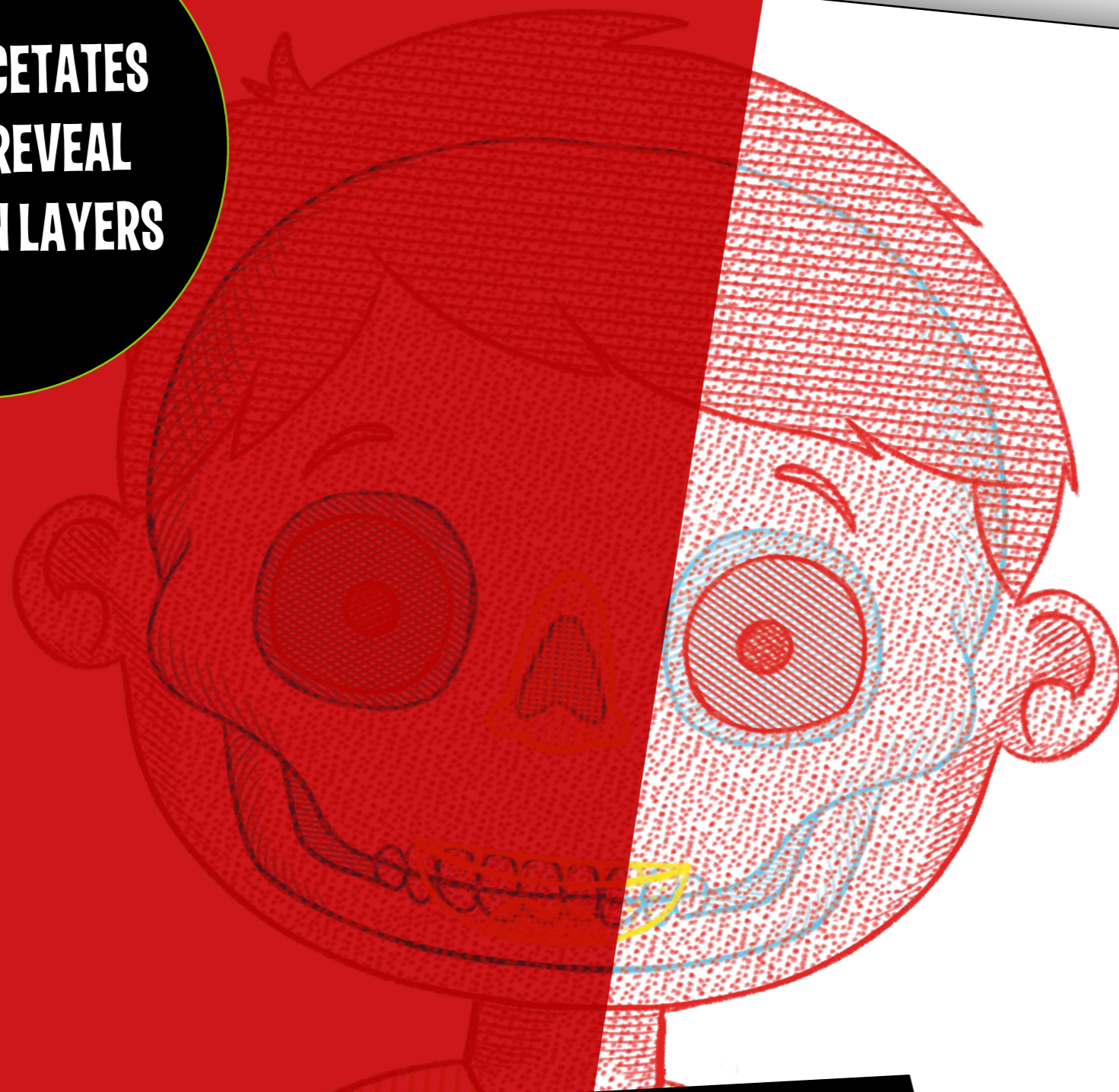


Your mouth tells you what your food tastes like.

To see your mouth, look through the BLUE filter.



**COLOUR ACETATES
FILTERS REVEAL
THE HIDDEN LAYERS**



An innovative and interactive way to learn about core subjects including the human body. Using acetate filters to discover hidden layers, children discover visual facts in a fun and interesting new learning experience.

Written by: Gail Penston

Illustrated by: Spike McGuire

Selling Points:

- Soft learning to help develop a good understanding of complex subjects.
- Novelty interactive element.
- Flexible concept with potential to develop.

R



G



B

